

# Safety relief valves CK - series

## Function

Safety relief valves reduce the outlet pressure by its release to the atmosphere or to the gas low-pressure system if the pressure exceeds the set values.

## Field of application

Gas pressure regulating stations and plants.

## Code structure

1	2	3	4	5	6	7
CK	1	0,5	P	2	50	TY BY 200020142.033-2013

1. **CK** — series
2. Connection size, inches
3. Max. operating pressure:  
**0,5** — 0,5 bar;  
**6** — 6 bar.
4. Version: **P** - equipped with forced opening device
- 5, 6. Valve's actuation adjustment range (lower - upper limit), mbar.
7. Technical conditions number.

Climatic version:

–30...+40 °C and –40...+40 °C — installation in closed unheated premises (spaces).

## Notes:

Valve's actuation adjustment range is determined by the type of spring installed in valve's body.

Type of connection should be specified: thread or flanged.

Body material — aluminium.

# Safety relief valve CK - series (thread connection)



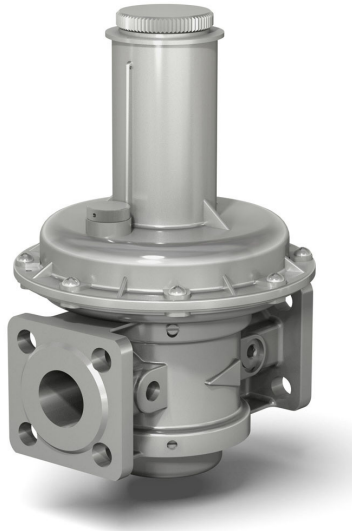
№ p/p	Characteristics	CK 1/2-0,5 (CK 1/2-0,5-P)*						CK 3/4-0,5 (CK 3/4-0,5-P)*					
		15	20	25	32	40	50	15	20	25	32	40	50
1	Nominal diameter	15	20	25	32	40	50	15	20	25	32	40	50
2	Max. inlet operating pressure, bar	0,5						6					
3	Thread diameter	1/2	3/4	1	1 1/4	1 1/2	2	1/2	3/4	1	1 1/4	1 1/2	2
4	Outlet pressure range, mbar	2,5–50; 20–150; 100–450		2,5–11; 10–70; 50–150; 100–450		6–40; 30–130; 100–200; 170–450		2,5–50; 20–150; 100–450		2,5–11; 10–70; 50–150; 100–450		6–40; 30–130; 100–200; 170–450	
		(determined by the type of spring used)											
5	Weight, kg., max.	1,7 (1,9)*	2,0 (2,2)*	4,0 (4,2)*	5,5 (5,7)*	5,9 (6,1)*		1,7 (1,9)*	2,0 (2,2)*	4,0 (4,2)*	6,5 (6,7)*	6,9 (7,1)*	
6	Dimensions, mm., max.												
	a) Length (installation)	105			162			105			162		
	b) Width	143			250			143			250		
	в) Height	210 (260)*			395 (428)*			210 (260)*			454 (487)*		
7	Temperature of operation medium, °C	–30...+70											
8	Mounting position	Horizontal (recommended), vertical											

\* For version equipped with forced opening device.

Order example of safety relief valve nominal diameter DN 25 (connection size 1 inch), thread connection, with max. inlet pressure 0,5 bar and actuation adjustment range: 2,5 — 11 mbar:

**Valve CK 1-0,5-2,5-11**

# Safety relief valve CK - series (flanged connection)



No p/p	Characteristics	CK 1/2-0,5 fl. (CK 1/2-0,5-P fl.)*	CK 3/4-0,5 fl. (CK 3/4-0,5-P fl.)*	CK 1-0,5 fl. (CK 1-0,5-P fl.)*	CK 1 1/4-0,5 fl. (CK 1 1/4-0,5-P fl.)*	CK 1 1/2-0,5 fl. (CK 1 1/2-0,5-P fl.)*	CK 2-0,5 fl. (CK 2-0,5-P fl.)*	CK 1/2-6 fl. (CK 1/2-6-P fl.)*	CK 3/4-6 fl. (CK 3/4-6-P fl.)*	CK 1-6 fl. (CK 1-6-P fl.)*	CK 1 1/4-6 fl. (CK 1 1/4-6-P fl.)*	CK 1 1/2-6 fl. (CK 1 1/2-6-P fl.)*	CK 2-6 fl. (CK 2-6-P fl.)*
1	Nominal diameter	15	20	25	32	40	50	15	20	25	32	40	50
2	Max. inlet operating pressure, bar	0,5						6					
3	Center to center distance of connecting orifices, mm. / orifice diameter, mm.	55 / 12	65 / 12	75 / 11	90 / 14	100 / 14	110 / 14	55 / 12	65 / 12	75 / 11	90 / 14	100 / 14	110 / 14
4	Outlet pressure range, mbar	2,5-50; 20-150; 100-450	2,5-11; 10-70; 50-150; 100-450	6-40; 30-130; 100-200; 170-450			2,5-50; 20-150; 100-450	2,5-11; 10-70; 50-150; 100-450	6-40; 30-130; 100-200; 170-450				
		(determined by the type of spring used)											
5	Weight, kg., max.	2,0 (2,2)*	2,4 (2,6)*	4,5 (4,7)*	6,0 (6,2)*	6,7 (6,9)*	2,0 (2,2)*	2,4 (2,6)*	4,5 (4,7)*	6,0 (6,2)*	7,2 (7,4)*		
6	Dimensions, mm., max.												
	a) Length (installation)	147	160	187			147	160	187				
	б) Width	143		250			143		250				
	в) Height	210 (260)*	235 (285)*	395 (428)*			210 (260)*	235 (285)*	454 (487)*				
7	Temperature of operation medium, °C	-30...+70											
8	Mounting position	Horizontal (recommended), vertical											

\* For version equipped with forced opening device.

Order example of safety relief valve nominal diameter DN 50 (connection size 2 inches), flanged connection, with max. inlet pressure 6 bar and actuation adjustment range: 170 — 450 mbar:

**Valve CK 2-6-170-450 fl.**