

# Safety shut-off valves ZK - series

## Function

Safety shut-off valves stop gas supply to the customer (shut-off the gas flow) when pressure increases over the set values.

## Field of application

Gas pressure regulating stations and plants.

## Code structure

1	2	3	4	5	6
ZK	1	0,5	60	120	TY BY 200020142.035-2013

- ZK** — series
- Connection size, inches
- Max. operating pressure:  
**0,5** — 0,5 bar;  
**6** — 6 bar.
- 4, 5. Valve's actuation adjustment range (lower - upper limit):

For version up to 0,5 bar:

<b>60–120:</b>	60–120 mbar;
<b>80–150:</b>	80–150 mbar;
<b>110–230:</b>	110–230 mbar;
<b>220–450:</b>	220–450 mbar.

For version up to 6 bar:

<b>90–160:</b>	90–160 mbar;
<b>110–180:</b>	110–180 mbar;
<b>130–260:</b>	130–260 mbar;
<b>250–500:</b>	250–500 mbar.

6. Technical conditions number.

Climatic version:

–30...+40 °C and –40...+40 °C — installation in closed unheated premises (spaces).

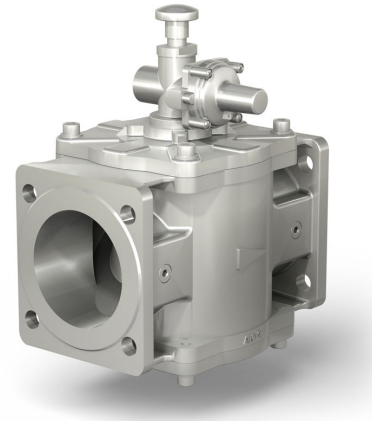
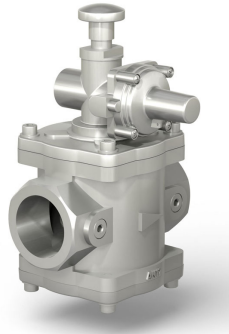
## Notes:

Valve's actuation adjustment range is determined by the type of spring installed in valve's body.

For the valves ZK1, ZK1¼, ZK1½, ZK2 type of connection should be specified: thread or flanged.

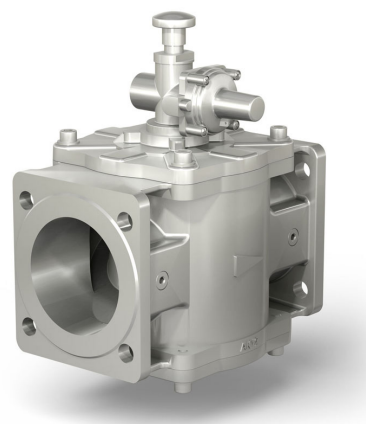
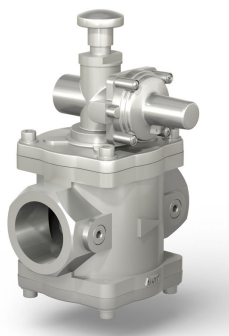
Body material of safety shut-off valves — aluminium, steel.

## Safety shut-off valves ZK - series (pressure up to 0,5 bar)



№ p/p	Characteristics	ZK 1½-0,5	ZK ¾-0,5	ZK 1-0,5	ZK 1¼-0,5	ZK 1½-0,5	ZK 2-0,5	ZK 1-0,5 fl.	ZK 1½-0,5 fl.	ZK 1½-0,5 fl.	ZK 2-0,5 fl.	ZK 2½-0,5	ZK 3-0,5	ZK 4-0,5	ZK 5-0,5	ZK 6-0,5	ZK 8-0,5
		1	Body material	aluminium												steel	
2	Nominal diameter	15	20	25	32	40	50	25	32	40	50	65	80	100	125	150	200
3	Max. inlet operating pressure, bar	0,5															
4	Thread diameter	½	¾	1	1¼	1½	2	—									
5	Center to center distance of connecting orifices, mm. / orifice diameter, mm. (number of orifices)	—						75 / 11 (4 orifices)	90 / 12,5 (4 orifices)	100 / 12,5 (4 orifices)	110 / 14 (4 orifices)	130 / 14 (4 orifices)	150 / 18 (4 orifices)	170 / 18 (4 orifices)	200 / 18 (4 orifices)	225 / 18 (4 orifices)	280 / 18 (4 orifices)
6	Actuation range, mbar	60–120; 80–150; 110–230; 220–450 (determined by the type of spring used)															
7	Weight, kg., max.	3,0	3,2	4,0	5,2	5,5	4,0	4,2	5,4	5,6	8,2	9,5	11,5	53	95	130	
8	Dimensions, mm., max.																
	a) Length (installation)	91	105	162			160	162		187	235	258	278	400	470	600	
	b) Width	275	280	300	305	310	296	300	305	310	320	325	332	305	330	430	
	Height	205	210	256	267	270	250	256	267	270	308	322	348	450	520	630	
9	Temperature of operation medium, °C	-30...+70															
10	Mounting position	Horizontal (recommended), vertical															

## Safety shut-off valves ZK - series (pressure up to 6 bar)



№ p/p	Characteristics	ZK 1/2-6	ZK 3/4-6	ZK 1-6	ZK 1 1/4-6	ZK 1 1/2-6	ZK 2-6	ZK 1-6 fl.	ZK 1 1/4-6 fl.	ZK 1 1/2-6 fl.	ZK 2-6 fl.	ZK 2 1/2-6	ZK 3-6	ZK 4-6	ZK 5-6	ZK 6-6	ZK 8-6
		1	Body material	aluminium												steel	
2	Nominal diameter	15	20	25	32	40	50	25	32	40	50	65	80	100	125	150	200
3	Max. inlet operating pressure, bar	6															
4	Thread diameter	1/2	3/4	1	1 1/4	1 1/2	2	—									
5	Center to center distance of connecting orifices, mm. / orifice diameter, mm. (number of orifices)	—						75 / 11 (4 orifices)	90 / 12,5 (4 orifices)	100 / 12,5 (4 orifices)	110 / 14 (4 orifices)	130 / 14 (4 orifices)	150 / 18 (4 orifices)	170 / 18 (4 orifices)	200 / 18 (4 orifices)	225 / 18 (4 orifices)	280 / 18 (4 orifices)
6	Actuation range, mbar	90–160; 110–180; 130–260; 250–500 (determined by the type of spring used)															
7	Weight, kg., max.	3,0	3,2	4,0	5,2	5,5	4,0	4,2	5,4	5,6	8,2	9,5	11,5	53	95	130	
8	Dimensions, mm., max.																
	a) Length (installation)	91	105	162			160	162		187	235	258	278	400	470	600	
	b) Width	275	280	300	305	310	296	300	305	310	320	325	332	305	330	430	
	b) Height	205	210	256	267	270	250	256	267	270	308	322	348	450	520	630	
9	Temperature of operation medium, °C	–30...+70															
10	Mounting position	Horizontal (recommended), vertical															

## Safety shut-off valves ZK - series (with PN 16 flanges)



№ p/p	Characteristics	ZK 1¼-0,5 fl., PN16	ZK 1½-0,5 fl., PN16	ZK 2-0,5 fl., PN16	ZK 2½-0,5, PN16	ZK 3-0,5, PN16	ZK 4-0,5, PN16	ZK 1¼-6 fl., PN16	ZK 1½-6 fl., PN16	ZK 2-6 fl., PN16	ZK 2½-6, PN16	ZK 3-6, PN16	ZK 4-6, PN16
		1	Body material	aluminium									
2	Nominal diameter	32	40	50	65	80	100	32	40	50	65	80	100
3	Max. inlet operating pressure, bar	0,5						6					
4	Center to center distance of connecting orifices, mm. / orifice diameter, mm. (number of orifices)	100 / 18 (4 orifices)	110 / 18 (4 orifices)	125 / 18 (4 orifices)	145 / 18 (4 orifices)	160 / 18 (8 orifices)	180 / 18 (8 orifices)	100 / 18 (4 orifices)	110 / 18 (4 orifices)	125 / 18 (4 orifices)	145 / 18 (4 orifices)	160 / 18 (8 orifices)	180 / 18 (8 orifices)
5	Actuation range, mbar	60-120; 80-150; 110-230; 220-450						90-160; 110-180; 130-260; 250-500					
		(determined by the type of spring used)											
6	Weight, kg., max.	5,9	6,2	6,4	9,1	10,4	12,5	5,9	6,2	6,4	9,1	10,4	12,5
7	Dimensions, mm., max.												
	a) Length (installation)	230			260	290	314	230			260	290	314
	b) Width	310			340	345	355	310			340	345	355
	b) Height	280			320	340	355	280			320	340	355
8	Temperature of operation medium, °C	-30...+70											
9	Mounting position	Horizontal (recommended), vertical											

Ordering the shut-off valve with PN 16 flanges, please, specify the type of connecting flanges.

Order example: Safety shut-off valve ZK4-0,5-60-120 (Version: with PN 16 flanges).